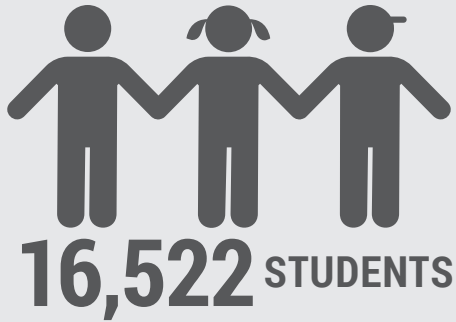


Local Control and Accountability Plan Summary

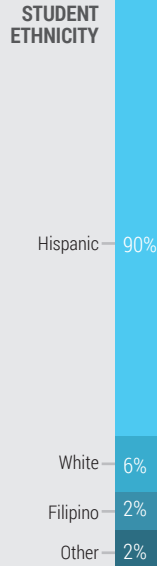
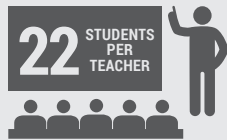
2022-23
Salinas UHSD
Page 1 of 2



DISTRICT STORY



High School: 5	Adult School: 1
Middle School: 4	Alternative
Ind. Study: 1	High School: 1



STUDENT GROUPS



District Mission

Guided by educational equity and through innovation, discovery, and support, the SUHSD will meet the academic, behavioral, and social-emotional needs of each student to ensure achievement of their aspirations.



CA PBIS Coalition Medals

In recognition of their ongoing, positive efforts throughout the COVID-19 pandemic, all SUHSD school sites received CA PBIS Coalition Medals for 2021-22 (3 Platinum, 5 Gold, 3 Silver).

Supporting Mental Health

Two of our schools are demo sites for the Interconnected Systems Framework through PBIS and have been recognized for the work being done with mental health support.



LCAP HIGHLIGHTS

GOAL #1



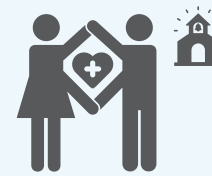
Prepare All Students for College and Career

GOAL #2



Qualified, Diverse, and High-Quality Staff

GOAL #3



Nurturing and Positive Learning Environment

GOAL #4



English Learner Language Proficiency

GOAL #5



Students with Disabilities will Graduate College and Career Ready

GOAL #6



Foster and Homeless Youth Attendance



Local Control and Accountability Plan Summary



REFLECTION: SUCCESSES



State Seal of Biliteracy

Indicator: Local Metric



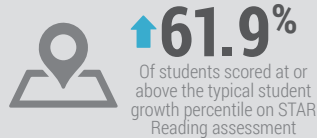
CTE Pathway Completion

Indicator: Local Metric



Reading Progress

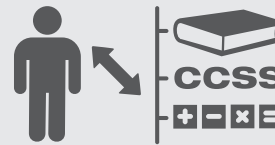
Indicator: Local Metric



Planned Actions to Maintain Progress:

- 1.2** - The District will begin to use Naviance as the tool to systematize career development and exploration for all 7-12 graders.
- 1.7** - Provide students with opportunities within the District instructional program and Salinas communities to earn the Seal of Civic Engagement.
- 4.3** - Align the District instructional framework and model with state literacy initiatives like the Seal of Biliteracy.

REFLECTION: IDENTIFIED NEEDS



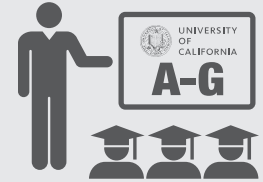
Access to Grade-level Standards

Indicator: Local Metric



Family Engagement

Indicator: Local Metric



Graduation and A-G Completion

Indicator: Local Metric



Planned Actions to Address Needs:

- 3.5** - Provide parents with opportunities to attend various conferences and workshops delivered by SUSHD staff and community partners.
- 5.4** - Continue to provide supplemental instructional resources to support Students with Disabilities (Co-teaching supports, targeted supports).
- 6.1** - Coordinate college visits and provide FAFSA/Scholarship workshops and support for FY and YIT.

COMPREHENSIVE SUPPORT AND IMPROVEMENT

IDENTIFIED SCHOOLS



- El Puente High School
- Carr Lake Community Day School

PROVIDE SUPPORT FOR SCHOOLS

Salinas UHSD supported these schools in developing CSI plans through:



- School-level needs assessments
- Analysis of dashboard and survey data
- Identification of key actions and services to address the areas of improvement

MONITOR AND EVALUATE EFFECTIVENESS

Implementation and effectiveness of the CSI plan will be monitored through:



- Monthly review of actions and services
- Monitoring data-based metrics
- Regular review of achievement, attendance, and discipline data, in order to identify successes and challenges

